

Engine and Related Components

Page No.

1	3a (3 Cylinder - Dexta, Super Dexta)
	Overhaul Kits, Piston, Ring, Liner & Gaskets (3 Cylinder - Dexta 3.144 cu in)
2	Overhaul Kits, Piston, Ring, Liner & Gaskets (3 Cylinder - Super Dexta 3.152 cu in)
3-4	Crankshaft, Bearings, Connecting Rods
5	Oil & Fuel Pumps, Filters
6	Cylinder Head, Camshaft
7	Exhaust System
	3b (4 Cylinder - 39-64)
8	Pistons, Rings, Liners Gasket & Cylinder Head
9	Crankshaft, Bearing & Related Components
10	Oil Pumps & Filters
11	Fuel System Components
12	Air Cleaners & Related Components
13	Manifolds & Mufflers
	3c (Fordson Major, Power Major, Super Major)
14	Overhaul Kits, Pistons, Rings, Liners
15	Crankshaft, Main Bearings & Related Components
16	Oil & Fuel Pumps, Filters & Related Components
17	Valves & Camshaft
18	Exhaust System
19-20	Technical Information

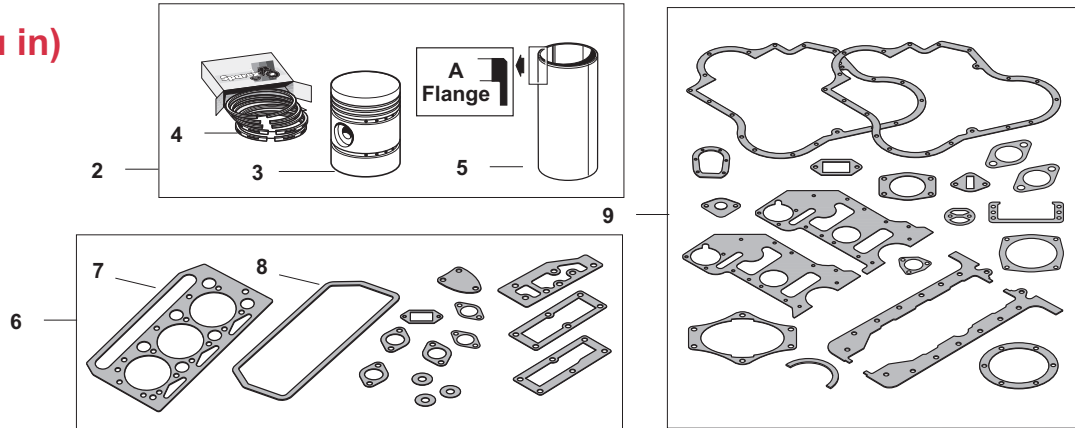
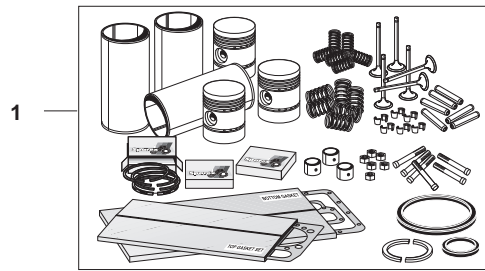
Please see Index for alternative O.E. part numbers.

These parts are Sparex parts and are not manufactured by the Original Equipment Manufacturer. Original Equipment Manufacturers names, part numbers and descriptions are quoted for reference purposes only.

F3_a

Spare Parts for FORD
Tractors Built 1939 to 1964

Overhaul Kits, Pistons, Rings, Liners, Gaskets (3 Cylinder - Dexta 3.144 cu in)



SPAREX No.	DESCRIPTION	EQUIVALENT	TRACTOR MODEL
1	S.66596 Overhaul Kit w/ Valve Train Kit - <u>Straight - Unfinished Liner</u> Contains: Pistons, Rings, Liners, Upper & Lower Gasket Sets, Intake & Exhaust Valves, Rod Bushings, Rod Bolts & Nuts, Front & Rear Crankshaft Seals, Guides, Springs, Keepers		Dexta 3.144 cu in (NOTE: If Block has Counterbore at top of cylinder, use Kit S.40368 or S.40387)
1	S.40387 Overhaul Kit w/ Valve Train Kit - <u>Flanged - Unfinished Liner</u>		Dexta 3.144 cu in (NOTE: If Block <u>does not have</u> Counterbore at top of cylinder use Kit S.66596)
1	S.40368 Overhaul Kit w/ Valve Train Kit - <u>Flanged - Finished Liner</u>		Dexta 3.144 cu in (NOTE: If Block <u>does not have</u> Counterbore at top of cylinder use Kit S.66596)
2	S.66663 Piston, Ring & Liner Kit <u>Straight - Unfinished Liner</u>		Dexta 3.144 cu in (NOTE: If Block has Counterbore at top of cylinder use Kit S.40461 or S.40446)
2	S.40461 Piston, Ring & Liner Kit <u>Flanged - Unfinished Liner</u>		Dexta 3.144 cu in (NOTE: If Block <u>does not have</u> Counterbore cylinder use Kit S.66663)
2	S.40446 Piston, Ring & Liner Kit <u>Flanged - Finished Liner</u>		Dexta 3.144 cu in (NOTE: If Block <u>does not have</u> Counterbore at top of cylinder use Kit S.66663)
3	S.40404 Piston, w/ Pin & Keepers	957E6102C	Dexta 3.144 cu in
4	S.40418 Ring Set - 1 Cylinder	957E6149A	Dexta 3.144 cu in
5	S.75967 Liner - <u>Straight - Unfinished Liner</u>	957E6055	Dexta 3.144 cu in (NOTE: If Block has Counterbore at top of cylinder use S.40433 or S.40439)
5	S.40439 Liner - <u>Flanged - Unfinished Liner</u>	957E6055	Dexta 3.144 cu in (NOTE: If Block <u>does not have</u> Counterbore at top of cylinder use Kit S.75967)
5	S.40433 Liner - <u>Flanged - Finished Liner</u>	957E6055	Dexta 3.144 cu in (NOTE: If Block <u>does not have</u> Counterbore at top of cylinder use Kit S.75967)
6	S.40588 Upper Gasket Set		Dexta 3.144 cu in
7	S.40619 Head Gasket	960E6051	Dexta 3.144 cu in
8	S.40630 Rocker Cover Gasket	957E6584	Dexta 3.144 cu in
9	S.66827 Lower Gasket Set - less Crankshaft Seals		Dexta 3.144 cu in



Please see Index for alternative O.E. part numbers.

These parts are Sparex parts and are not manufactured by the Original Equipment Manufacturer. Original Equipment Manufacturer names, part numbers and descriptions are quoted for reference purposes only.

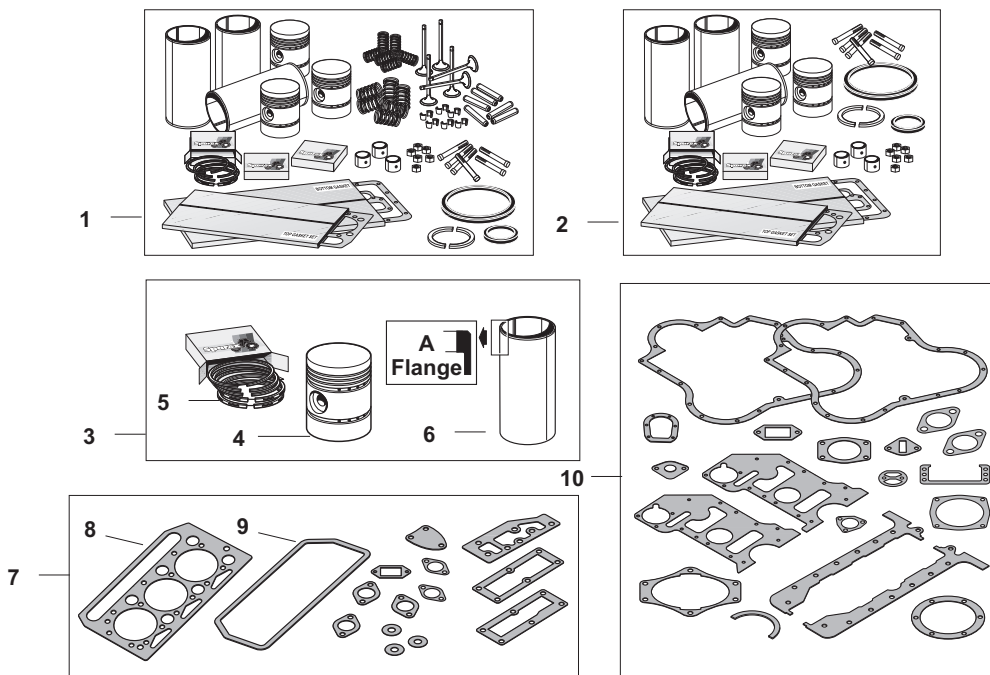
1 - A

OVERHAUL KITS, PISTONS, RINGS, LINERS, GASKETS
(3 Cylinder Dexta 3.144 cu in.)

	<u>Sparex No.</u>	<u>Price</u>
1.	S.66596	\$530.22
1.	S.40387	\$493.72
1.	S.40368	\$568.32
2.	S.66663	Call for Price
2.	S.40461	\$88.82
2.	S.40446	\$122.48
3.	S.40404	\$59.85
4.	S.40418	\$16.77
5.	S.75967	\$49.65
5.	S.40439	\$31.97
5.	S.40433	\$44.32
6.	S.40588	\$28.97
7.	S.40619	\$25.77
8.	S.40630	\$2.58
9.	S.66827	\$35.43

WE ARE NOT RESPONSIBLE FOR MIS-PRINTS OR PRICE CHANGES

**Overhaul Kits,
Pistons, Rings,
Liners, Gaskets
(3 Cylinder -
Super Dexta
3.152 cu in)**



SPAREX No.	DESCRIPTION	EQUIVALENT	TRACTOR MODEL
1	S.66597 Overhaul Kit w/ Valve Train Kit - Straight - Unfinished Liner Contains: Pistons, Rings, Liners, Upper & Lower Gasket Sets, Intake & Exhaust Valves, Rod Bushings, Rod Bolts & Nuts, Front & Rear Crankshaft Seals, Guides, Springs, Keepers		Super Dexta 3.152 cu in (NOTE: If Block has Counterbore at top of cylinder, use Kit S.40388, S.40368 or S.41883)
1	S.40388 Overhaul Kit w/ Valve Train Kit - Flanged - Unfinished Liner		Super Dexta 3.152 cu in (NOTE: If Block does not have Counterbore at top of cylinder use Kit S.66597)
1	S.40370 Overhaul Kit w/ Valve Train Kit - Flanged - Finished Liner		Super Dexta 3.152 cu in (NOTE: If Block does not have Counterbore at top of cylinder use Kit S.66597)
2	S.41883 Overhaul Kit less Valve Train Kit - Flanged - Finished Liner		Super Dexta 3.152 cu in (NOTE: If Block does not have Counterbore at top of cylinder use Kit S.66597)
3	S.66664 Piston, Ring & Liner Kit - Straight - Unfinished Liner		Super Dexta 3.152 cu in (NOTE: If Block has a Counterbore at top of cylinder use Kit S.40460 or S.40445)
3	S.40460 Piston, Ring & Liner Kit - Flanged - Unfinished Liner		Super Dexta 3.152 cu in (NOTE: If Block does not have Counterbore at top of cylinder use Kit S.66664)
3	S.40445 Piston, Ring & Liner Kit - Flanged - Finished Liner		Super Dexta 3.152 cu in (NOTE: If Block does not have Counterbore at top of cylinder use Kit S.66664)
4	S.40403 Piston w/ Pin & Keepers	960E6102B	Super Dexta 3.152 cu in
5	S.40417 Ring Set - Cord Ring - 1 Cylinder	960E6149A	Super Dexta 3.152 cu in
5	S.40430 Ring Set - Standard Type - 1 Cylinder	960E6149A	Super Dexta 3.152 cu in
5	S.41323 Ring Set - Duaflex Type - 1 Cylinder	960E6149A	Super Dexta 3.152 cu in
6	S.75968 Liner - <u>Straight</u> - <u>Unfinished</u>	960E6055	Super Dexta 3.152 cu in (NOTE: If Block has a Counterbore at top of Cylinder use S.40438 or S.40432)
6	S.40438 Liner - <u>Flanged</u> - <u>Unfinished</u>		Super Dexta 3.152 cu in (NOTE: If Block does not have Counterbore at top of Cylinder use S.75968)
6	S.40432 Liner - <u>Flanged</u> - <u>Finished</u>		Super Dexta 3.152 cu in (NOTE: If Block does not have Counterbore at top of Cylinder use S.75968)
7	S.40588 Upper Gasket Set	957E6608	Super Dexta 3.152 cu in
8	S.40619 Head Gasket	960E6051	Super Dexta 3.152 cu in
9	S.40630 Rocker Cover Gasket	957E6584	Super Dexta 3.152 cu in
10	S.66827 Lower Gasket Set - less Crankshaft Seals		Super Dexta 3.152 cu in

Please see Index for alternative O.E. part numbers.

These parts are Sparex parts and are not manufactured by the Original Equipment Manufacturer. Original Equipment Manufacturer names, part numbers and descriptions are quoted for reference purposes only.

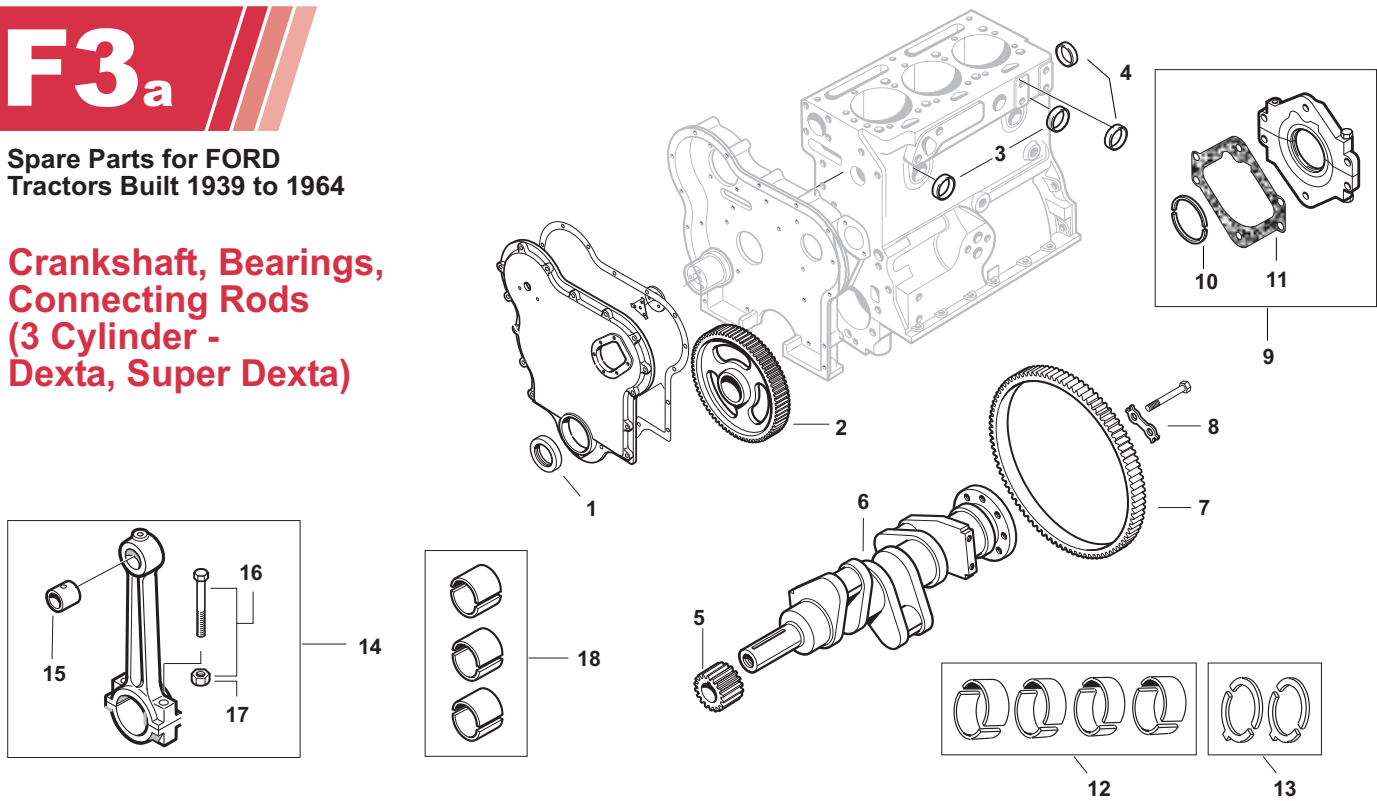
2 - A

OVERHAUL KITS, PISTONS, RINGS, LINERS AND GASKETS
(3 Cylinder Super Dexta 3.152 cu in.)

	<u>Sparex No.</u>	<u>Price</u>
1.	S.66597	\$502.92
1.	S.40388	\$513.33
1.	S.40370	\$444.07
2.	S.41883	\$390.78
3.	S.66664	\$95.83
3.	S.40460	\$80.83
3.	S.40445	\$85.27
4.	S.40403	\$39.97
5.	S.40417	\$16.07
5.	S.40430	\$16.33
5.	S.41323	\$15.10
6.	S.75968	\$49.65
6.	S.40438	\$35.43
6.	S.40432	\$33.12
7.	S.40588	\$28.97
8.	S.40619	\$25.77
9.	S.40630	\$2.58
10.	S.66827	\$35.43

WE ARE NOT RESPONSIBLE FOR MIS-PRINTS OR PRICE CHANGES

Crankshaft, Bearings, Connecting Rods (3 Cylinder - Dexta, Super Dexta)



SPAREX No.	DESCRIPTION	EQUIVALENT	TRACTOR MODEL
1	S.65980 Seal - Front Timing Cover	957E6362	Dexta, Super Dexta
2	S.40523 Idler Gear - 90 Teeth (9 1/2" Dia)	E33CP9	Dexta, Super Dexta
3	S.08449 Expansion Plug (1 1/4")	115411ES	Dexta, Super Dexta
3	S.12874 Expansion Plug (1 1/4") Stainless	115411ES	Dexta, Super Dexta
4	S.08444 Expansion Plug (7/8")	115412ES	Dexta, Super Dexta
5	S.40353 Gear - Crankshaft	957E6306	Dexta, Super Dexta
6	S.61955 Crankshaft less Bearings	E2006T9	Dexta, Super Dexta
7	S.65998 Ring Gear	957E6384B	Dexta, Super Dexta
8	S.40347 Flywheel Bolt - Lock Tab	957E6367	Dexta, Super Dexta
9	S.41494 Rear Seal Assembly Includes: Seal, Gasket, Retainer		Dexta, Super Dexta
10	S.40354 Seal - Rear Main Rope	957E6701	Dexta, Super Dexta
11	S.41494 Gasket - Rear Main Seal	957E6344A	Dexta, Super Dexta
12	S.40331 Main Bearing Set - Standard (less Thrust Bearings)	957E6331L/R 957E6333L/R 957E6341L/R 957E6342L/R	Dexta, Super Dexta
12	S.40332 Main Bearing Set - .010" (less Thrust Bearings)	957E6331M 957E6333M 957E6341M 957E6342M	Dexta, Super Dexta
12	S.40333 Main Bearing Set - .020" (less Thrust Bearings)	957E6331N 957E6333N 957E6341N 957E6342N	Dexta, Super Dexta
12	S.40334 Main Bearing Set - .030" (less Thrust Bearings)	957E6331P 957E6333P 957E6341P 957E6342P	Dexta, Super Dexta

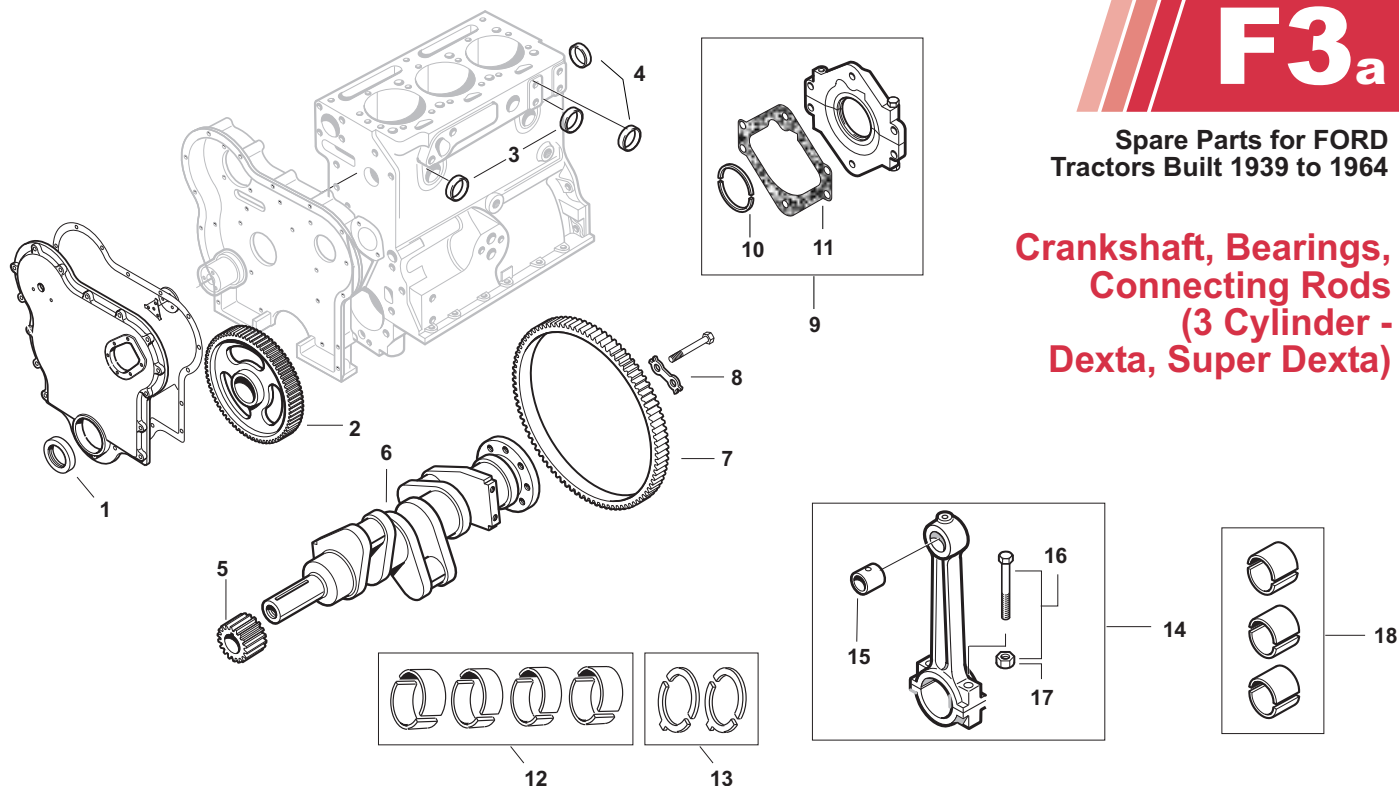
3 - A

CRANKSHAFT, BEARINGS AND CONNECTING RODS
(3 Cylinder - Dexta, Super Dexta)

	<u>Sparex No.</u>	<u>Price</u>
1.	S.65980	\$9.50
2.	S.40523	\$73.32
3.	S.08449	\$0.45
3.	S.12874	Call for Price
4.	S.08444	\$50.33
5.	S.40353	\$375.00
6.	S.61955	\$399.65
7.	S.65998	\$95.00
8.	S.40347	\$0.87
9.	S.41494	\$29.32
10.	S.40354	\$3.50
11.	S.41494	\$29.32
12.	S.40331	\$21.75
12.	S.40332	\$23.53
12.	S.40333	\$24.43
12.	S.40334	\$21.75

WE ARE NOT RESPONSIBLE FOR MIS-PRINTS OR PRICE CHANGES

Crankshaft, Bearings, Connecting Rods (3 Cylinder - Dexta, Super Dexta)



SPAREX No.	DESCRIPTION	EQUIVALENT	TRACTOR MODEL
12	S.42077 Main Bearing Set - .040" (less Thrust Bearings)		Dexta, Super Dexta
12	S.42114 Main Bearing Set - .050" (less Thrust Bearings)		Dexta, Super Dexta
13	S.40343 Thrust Washer Set - Standard - 2 pair (.122" thick - Squared Tab, Centered)	957E6334A 957E6336C	Dexta, Super Dexta (NOTE: ->SN 1449364 the lower thrust washer tab was rounded and offset. Later engines used a squared tab located in the center of the washer.)
13	S.40344 Thrust Washer Set - .007" (.129" thick - Squared Tab, Centered)	957E6334B 957E6336D	Same as Above
14	S.40357 Connecting Rod Assembly	957E6200	Dexta, Super Dexta
15	S.40360 Connecting Rod Bushing	957E6207	Dexta, Super Dexta
16	S.40362 Connecting Rod Bolt & Nut	957E6215 385279S2	Dexta, Super Dexta
17	S.41328 Connecting Rod Nut	385279S2	Dexta, Super Dexta
18	S.40315 Rod Bearing Set - Standard	957E6211Fx6	Dexta, Super Dexta
18	S.40316 Rod Bearing Set - .010"	957E6211Gx6	Dexta, Super Dexta
18	S.40317 Rod Bearing Set - .020"	957E6211Hx6	Dexta, Super Dexta
18	S.40318 Rod Bearing Set - .030"	957E6211Jx6	Dexta, Super Dexta
18	S.42079 Rod Bearing Set - .040"		Dexta, Super Dexta
18	S.42109 Rod Bearing Set - .050"		Dexta, Super Dexta

Please see Index for alternative O.E. part numbers.

These parts are Sparex parts and are not manufactured by the Original Equipment Manufacturer. Original Equipment Manufacturer names, part numbers and descriptions are quoted for reference purposes only.

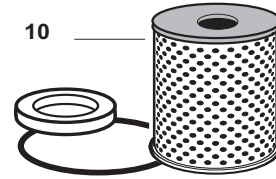
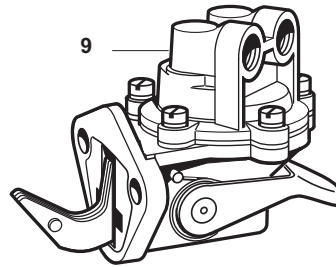
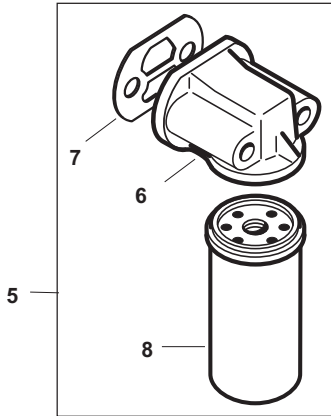
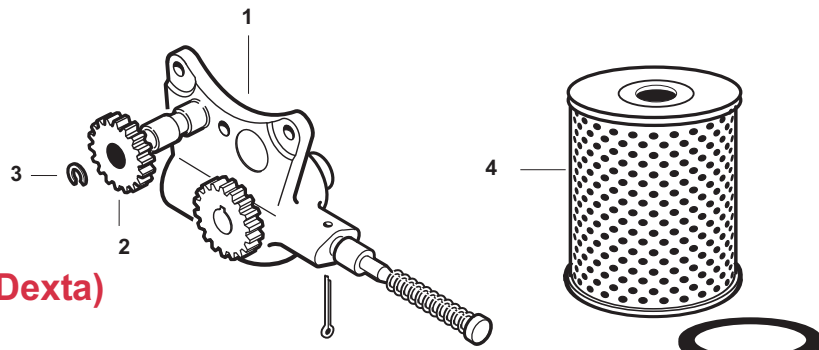
4 - A

CRANSHAFT, BEARINGS, AND CONNECTING RODS CONT.
(3 Cylinder - Dexta, Super Dexta)

	<u>Sparex No.</u>	<u>Price</u>
12.	S.42077	\$66.00
12.	S.42114	\$35.53
13.	S.40343	\$7.02
13.	S.40344	\$12.70
14.	S.40357	\$84.82
15.	S.40360	\$2.40
16.	S.40362	\$3.23
17.	S.41328	\$1.07
18.	S.40315	\$12.08
18.	S.40316	\$12.98
18.	S.40317	\$14.75
18.	S.40318	\$16.53
18.	S.42079	\$50.25
18.	S.42109	\$21.32

WE ARE NOT RESPONSIBLE FOR MIS-PRINTS OR PRICE CHANGES

Oil & Fuel Pumps, Filters (3 Cylinder - Dexta, Super Dexta)



SPAREX No.	DESCRIPTION	EQUIVALENT	TRACTOR MODEL
1	S.05934* Oil Pump	957E6600C	Dexta, Super Dexta
2	S.42125 Gear - Intermediate	957E6649	Dexta, Super Dexta
3	S.11899 Clip	E43CF9	Dexta, Super Dexta
4	S.40537 Oil Filter - Cartridge Type	EPN6731B	Dexta, Super Dexta
5	S.40533 Spin-on Filter Assembly - Includes: Head, Gasket, Filter		Dexta, Super Dexta
6	S.40531 Oil Filter Head		Dexta, Super Dexta
7	S.41933 Gasket		Dexta, Super Dexta
8	S.40536 Filter - Spin-on		Dexta, Super Dexta
9	S.60443 Fuel Lift Pump	957E9350B	Dexta, Super Dexta
10	S.61430 Fuel Filter Element	EPN99162A	Dexta, Super Dexta

***Note:**
S.05934 - If replacing old pump with lines on an angle, you will need to find straight lines. The oil tube ports come straight out of rear of this pump.

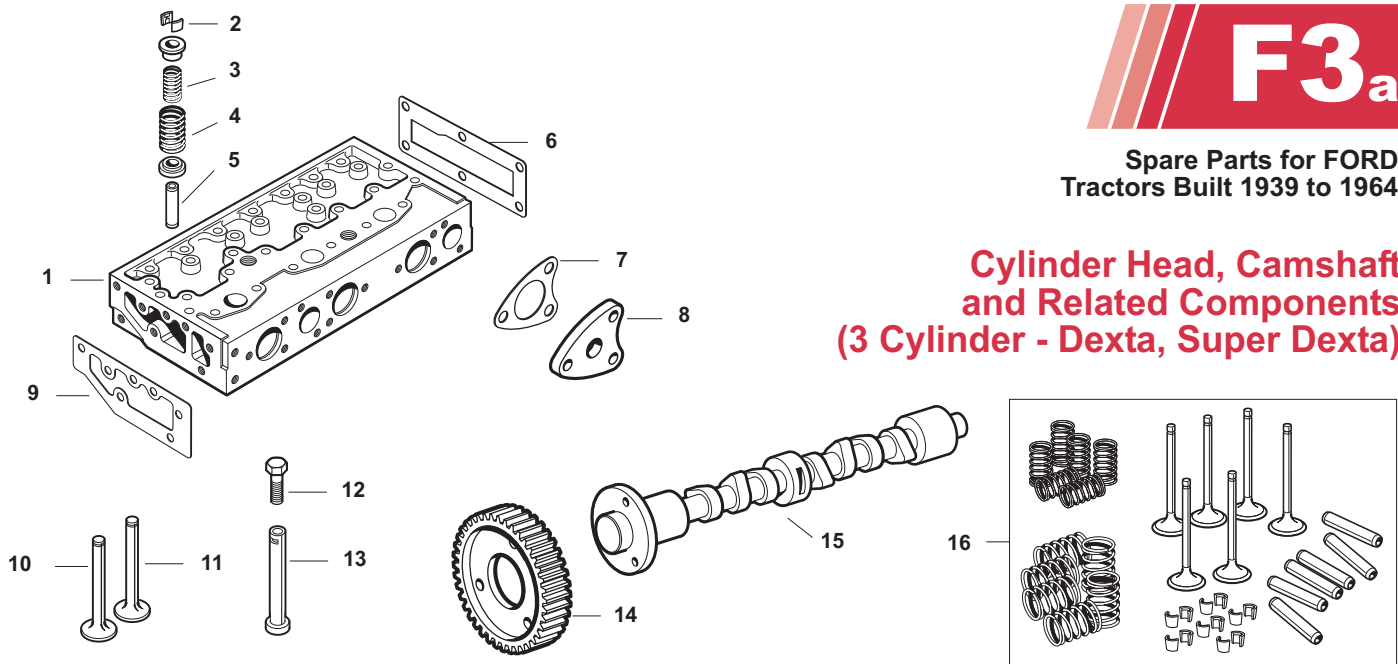
5 - A

OIL & FUEL PUMPS, FILTERS
(3 Cylinder - Dexta, Super Dexta)

	<u>Sparex No.</u>	<u>Price</u>
1.	S.05934	\$62.50
2.	S.42125	\$32.87
3.	S.11899	\$0.07
4.	S.40537	\$5.38
5.	S.40533	\$23.66
6.	S.40531	\$12.43
7.	S.41933	\$0.70
8.	S.40536	\$10.38
9.	S.60443	\$39.00
10.	S.61430	\$10.49

WE ARE NOT RESPONSIBLE FOR MIS-PRINTS OR PRICE CHANGES

**Cylinder Head, Camshaft
and Related Components
(3 Cylinder - Dexta, Super Dexta)**



SPAREX No.	DESCRIPTION	EQUIVALENT	TRACTOR MODEL
1	S.40303 Cylinder Head Assembly (Complete w/ Valves)	E2046T9	Dexta, Super Dexta
2	S.41412 Valve Collet - Sold per Piece	957E6518	Dexta, Super Dexta
3	S.40500 Inner Valve Spring	957E6509	Dexta, Super Dexta
4	S.40505 Outer Valve Spring	957E6513	Dexta, Super Dexta
5	S.40495 Valve Guide	957E6510B	Dexta, Super Dexta
6	S.42304 Gasket	E32CA9	Dexta, Super Dexta
7	S.42230 Gasket - Combustion Chamber Cap	957E6K003	Dexta, Super Dexta
8	S.41567 Combustion Chamber Cap	E62CA9	Dexta, Super Dexta
9	S.42211 Gasket - Thermostat Housing	957E8255	Dexta, Super Dexta
10	S.40475 Intake Valve	957E6507	Dexta, Super Dexta
11	S.40485 Exhaust Valve	957E6505	Dexta, Super Dexta
12	S.42291 Screw - Tappet Adjusting	957E6549	Dexta, Super Dexta
13	S.41345 Tappet - Camshaft Follower	957E6489	Dexta, Super Dexta
14	S.40520 Camshaft Gear	957E6256	Dexta, Super Dexta
15	S.41507 Camshaft	957E6250	Dexta, Super Dexta
16	S.41585 Valve Train Kit - Includes: Intake & Exhaust Valves, Guides, Springs, Keepers		Dexta, Super Dexta

Please see Index for alternative O.E. part numbers.

These parts are Sparex parts and are not manufactured by the Original Equipment Manufacturer.
Original Equipment Manufacturer names, part numbers and descriptions are quoted for reference purposes only.

6 - A

CYLINDER HEAD, CAMSHAFT AND RELATED COMPONENTS

(3 Cylinder - Dexta, Super Dexta)

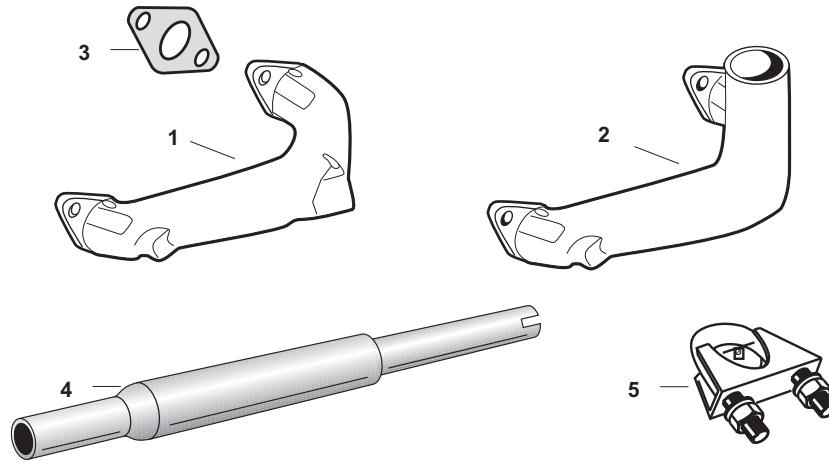
<u>Sparex No.</u>	<u>Price</u>
1. S.40303	\$500.73
2. S.41412	\$0.97
3. S.40500	\$0.92
4. S.40505	\$1.62
5. S.40495	\$2.47
6. S.42304	\$1.07
7. S.42230	\$1.75
8. S.41567	\$32.50
9. S.42211	\$2.42
10. S.40475	\$4.88
11. S.40485	\$5.83
12. S.42291	Call for Price
13. S.41345	\$9.23
14. S.40520	\$48.85
15. S.41507	\$105.70
16. S.41585	\$69.27

WE ARE NOT RESPONSIBLE FOR MIS-PRINTS OR PRICE CHANGES

F3_a

Spare Parts for FORD
Tractors Built 1939 to 1964

Exhaust System (3 Cylinder - Dexta, Super Dexta)



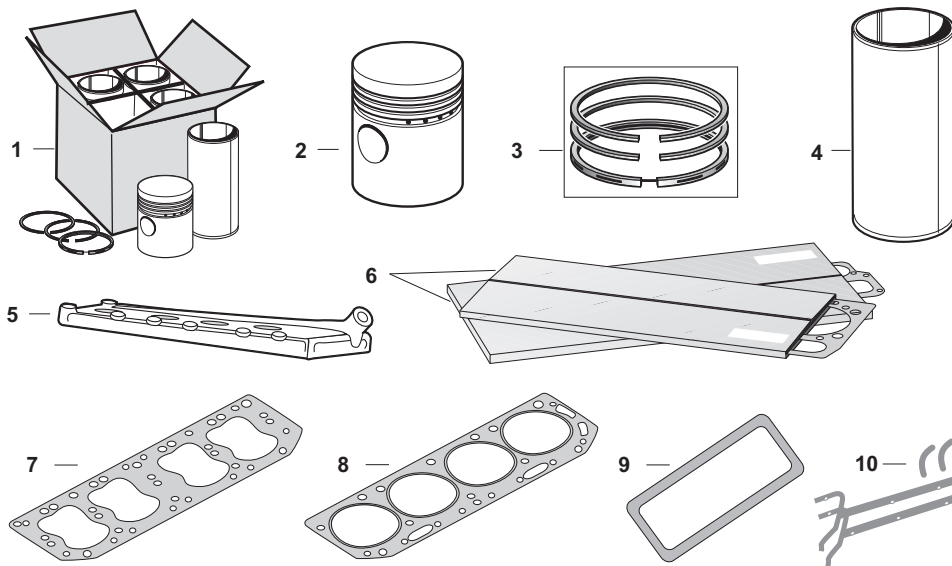
	SPAREX No.	DESCRIPTION	EQUIVALENT	TRACTOR MODEL
1	S.66046	Manifold - Horizontal	957E9430B	Dexta, Super Dexta
2	S.66047	Manifold - Vertical	957E9430A	Dexta, Super Dexta
3	S.41348	Gasket - 2 Required	957E9448	Dexta, Super Dexta
4	S.06303	Muffler - Vertical	957E5230D	Dexta, Super Dexta
5	S.08872	Muffler Clamp (1 1/8")		
5	S.08873	Muffler Clamp (1 1/4")		
5	S.08874	Muffler Clamp (1 3/8")		
5	S.08875	Muffler Clamp (1 1/2")		
5	S.08876	Muffler Clamp (1 5/8")		
5	S.08877	Muffler Clamp (1 11/16")		
5	S.08878	Muffler Clamp (1 3/4")		
5	S.08879	Muffler Clamp (1 7/8")		
5	S.08880	Muffler Clamp (2")		

7 - A

EXHAUST SYSTEM
(3 Cylinder - Dexta, Super Dexta)

	<u>Sparex No.</u>	<u>Price</u>
1.	S.66046	58.17
2.	S.66047	58.17
3.	S.41348	0.87
4.	S.06303	28.58
5.	S.08872	0.78
5.	S.08873	0.82
5.	S.08874	0.85
5.	S.08875	0.95
5.	S.08876	0.98
5.	S.08877	1.33
5.	S.08878	1.03
5.	S.08879	1.07
5.	S.08880	1.15

WE ARE NOT RESPONSIBLE FOR MIS-PRINTS OR PRICE CHANGES



Spare Parts for FORD
Tractors Built 1939 to 1964

**Piston, Ring,
Liners, Gaskets
and Cylinder Head
(4 Cylinder - 1939-1964)**

	SPAREX No.	DESCRIPTION	EQUIVALENT	TRACTOR MODEL
1	S.60704	Piston, Ring & Liner Kit (.040 Thin Wall) 3 Ring	APN6055E	9N, 2N, 8N (Piston - S.60840, Rings - S.60853, Liner - S.60847)
1	S.60705	Piston, Ring & Liner Kit (.090 Heavy Wall) 3 Ring	APN6055D	9N, 2N, 8N (Piston - S.60840, Rings - S.60853, Liner - S.60846)
1	S.60706	Piston, Ring & Liner Kit (3 1/2" Overbore) 3 Ring	CPN6055A	NAA, Jubilee, 600, 700, 601, 701, 2000 (134 cu. in. Gas Engine) (Piston - S.60841, Rings - S.60854, Liner - S.60848)
1	S.60708	Piston, Ring & Liner Kit (4" Overbore) 3 Ring	FPN6055A	800, 900, 801, 901, 4000 (172 cu. in. Gas Engine) (Piston - S.60842, Rings - S.60855, Liner - S.60845)
2	S.60840	Piston - 3 Ring	8N6108B	9N, 2N, 8N
2	S.60841	Piston - 3 Ring (3 1/2" Overbore)		NAA, Jubilee, 600, 700, 601, 701, 2000 (134 cu in Gas Engine) (Will not fit standard Bore)
2	S.60842	Piston - 3 Ring (4" Overbore)		800, 900, 801, 901, 4000 (172 cu in Gas Engine) (Will not fit standard Bore)
3	S.60853	Complete Ring Set - 3 Ring Chrome	8N6149B	9N, 2N, 8N
3	S.60854	Complete Ring Set - 3 Ring Chrome (3 1/2" Overbore)		NAA, Jubilee, 600, 700, 601, 701, 2000 (134 cu in Gas Engine) (Will not fit Standard Bore)
3	S.60855	Complete Ring Set - 3 Ring Chrome (4" Overbore)		800, 900, 801, 901, 4000 (172 cu in Gas Engine) (Will not fit Standard Bore)
4	S.60847	Liner (.040" Thin Wall)	C0NN6055B	9N, 2N, 8N
4	S.60846	Liner (.090" Heavy Wall)	8N6055B	9N, 2N, 8N
4	S.60848	Liner (3 1/2" Overbore)		NAA, Jubilee, 600, 700, 601, 701, 2000 (Must use oversize Piston & Ring)
4	S.60845	Liner (4" Overbore)		800, 900, 801, 901, 4000 (Must use oversize Piston & Ring)
5	S.66843	Cylinder Head	8N6050A	9N, 2N, 8N
6	S.60836	Overhaul Gasket Kit	8N6008	9N, 2N, 8N
6	S.61509	Overhaul Gasket Set w/ Crank Seals (Less Head Gasket)	309953	NAA, Jubilee, 600, 700, 800, 900, 601, 701, 801, 901, 2000, 4000 (Gas Only)
7	S.66458	Head Gasket - Non Metal	8N6051A	9N, 2N, 8N
8	S.61511	Head Gasket	EAE6051D	NAA, Jubilee, 600, 700 (-> 57)
8	S.60411	Head Gasket	D3JL6051A	601, 701, 2000 (58-64 Gas)
8	S.60442	Head Gasket	E9JL6051AA	800, 900, 801, 901, 4000 (55-64 Gas)
9	S.66457	Rocker Cover Gasket	EAE6584C	NAA, Jubilee, 600, 700, 800, 900, 601, 701, 801, 901, 2000, 4000 (Gas)
10	S.66459	Oil Pan Gasket & Seal Kit	9N6781	9N, 2N, 8N
11	S.66454	Oil Pan Gasket	EAF6710B	NAA, Jubilee, 600, 700, 800, 900, 601, 701, 801, 901, 2000, 4000

Please see Index for alternative O.E. part numbers.

These parts are Sparex parts and are not manufactured by the Original Equipment Manufacturer. Original Equipment Manufacturer names, part numbers and descriptions are quoted for reference purposes only.

8 - A

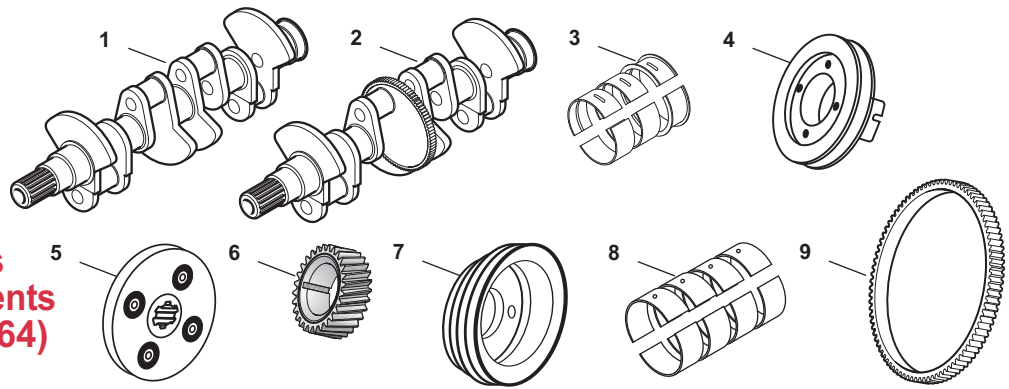
PISTON, RING, LINERS, GASKETS AND CYLINDER HEAD

(4 Cylinder - 1939 - 1964)

	<u>Sparex No.</u>	<u>Price</u>
1.	S.60704	\$216.53
1.	S.60705	\$216.53
1.	S.60706	\$346.80
1.	S.60708	\$416.15
2.	S.60840	\$17.40
2.	S.60841	\$30.18
2.	S.60842	\$34.18
3.	S.60853	\$29.32
3.	S.60854	\$24.43
3.	S.60855	\$23.38
4.	S.60847	\$28.00
4.	S.60846	\$29.22
4.	S.60848	\$35.35
4.	S.60845	\$29.57
5.	S.66843	\$215.00
6.	S.60836	\$30.30
6.	S.61509	\$35.13
7.	S.66458	\$13.17
8.	S.61511	\$16.50
8.	S.60411	\$13.33
8.	S.60442	\$17.68
9.	S.66457	\$7.08
10.	S.66459	\$12.42
11.	S.66454	\$5.32

WE ARE NOT RESPONSIBLE FOR MIS-PRINTS OR PRICE CHANGES

Crankshaft, Bearings and Related Components (4 Cylinder - 1939-1964)



SPAREX No.	DESCRIPTION	EQUIVALENT	TRACTOR MODEL	
1	S.66669	Crankshaft - Less Bearings	D1NL6303D	NAA, Jubilee, 600, 700, 800, 900, 601, 701, 801, 901, 2000, 4000 (Gas)
2	S.66670	Crankshaft - Less Bearings	E2JL6300BA	601, 701, 801, 901, 2000, 4000 (Diesel)
3	S.60871	Main Bearing Set - Std.	9N6333Ax4 9N6331Ax2	9N, 2N, 8N
3	S.60872	Main Bearing Set - .010"	9N6333Ex4 9N6331Ex2	9N, 2N, 8N
3	S.60873	Main Bearing Set - .020"	9N6333Gx4 9N6331Gx2	9N, 2N, 8N
3	S.60874	Main Bearing Set - .030"	A0NN6333A x4 A0NN6331A x2	9N, 2N, 8N
3	S.60875	Main Bearing Set - .040"		9N, 2N, 8N
3	S.60876	Main Bearing Set - Std.	EAF6331Ax4 EAF6342Cx2	NAA, Jubilee, 600, 700, 800, 900, 601, 701, 801, 901, 2000, 4000
3	S.60877	Main Bearing Set - .010"	EAF6331Dx4 EAF6342Fx2	NAA, Jubilee, 600, 700, 800, 900, 601, 701, 801, 901, 2000, 4000
3	S.60878	Main Bearing Set - .020"	EAF6331Ex4 EAF6342Gx2	NAA, Jubilee, 600, 700, 800, 900, 601, 701, 801, 901, 2000, 4000
3	S.60879	Main Bearing Set - .030"	C0NN6331Ex4	NAA, Jubilee, 600, 700, 800, 900, 601, 701, 801, 901, 2000, 4000
3	S.60880	Main Bearing Set - .040"	C0NN6331Fx4	NAA, Jubilee, 600, 700, 800, 900, 601, 701, 801, 901, 2000, 4000
4	S.61965	Pulley - Crankshaft (4 Bolt Holes 1/4" x 20)	192160 2N6312	9N, 2N, 8N
5	S.61559	Loader Drive Adaptor (3/4 - 6 Spline)	192161	9N, 2N, 8N
6	S.61043	Crankshaft Gear	EAF6306B	NAA, Jubilee, 600, 700, 800, 900, 601, 701, 801, 901, 2000, 4000
7	S.60796	Pulley - Crankshaft - Double Groove	C0NN6351A	600, 700, 800, 900, 601, 701, 801, 901, 2000, 4000
8	S.60881	Rod Bearing Set - Std.	9N6211Ax8	9N, 2N, 8N
8	S.60882	Rod Bearing Set - .010"	9N6211Ex8	9N, 2N, 8N
8	S.60883	Rod Bearing Set - .020"	9N6211Gx8	9N, 2N, 8N
8	S.60884	Rod Bearing Set - .030"	A0NN6211Ax8	9N, 2N, 8N
8	S.60885	Rod Bearing Set - .040"	A0NN6211Bx8	9N, 2N, 8N
8	S.60886	Rod Bearing Set - Std.	312026	NAA, Jubilee, 600, 700, 800, 900, 601, 701, 801, 901, 2000, 4000
8	S.60887	Rod Bearing Set - .010"	312103	NAA, Jubilee, 600, 700, 800, 900, 601, 701, 801, 901, 2000, 4000
8	S.60888	Rod Bearing Set - .020"	312104	NAA, Jubilee, 600, 700, 800, 900, 601, 701, 801, 901, 2000, 4000
8	S.60889	Rod Bearing Set - .030"	C0NN6211B	NAA, Jubilee, 600, 700, 800, 900, 601, 701, 801, 901, 2000, 4000
8	S.60890	Rod Bearing Set - .040"	C0NN6211C	NAA, Jubilee, 600, 700, 800, 900, 601, 701, 801, 901, 2000, 4000
9	S.61103	Ring Gear	9N6384	9N, 2N, 8N, NAA, Jubilee, 600, 700, 800, 900, 601, 701, 801, 901, 2000, 4000

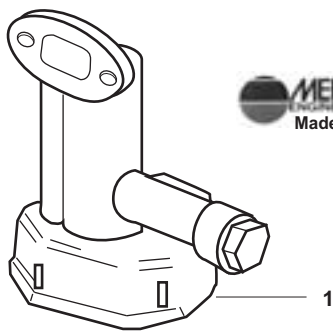
9 - A

CRANKSHAFT, BEARINGS AND RELATED COMPONENTS

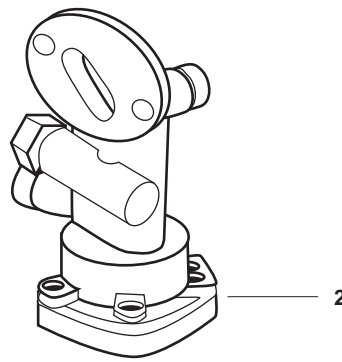
(4 Cylinder 1939 - 1964)

	<u>Sparex No.</u>	<u>Price</u>
1.	S.66669	\$632.68
2.	S.66670	\$708.72
3.	S.60871	\$47.08
3.	S.60872	\$47.08
3.	S.60873	\$47.08
3.	S.60874	\$47.08
3.	S.60875	\$47.08
3.	S.60876	\$49.30
3.	S.60877	\$49.30
3.	S.60878	\$49.30
3.	S.60879	\$49.30
3.	S.60880	\$49.30
4.	S.61965	\$49.57
5.	S.61559	\$34.55
6.	S.61043	\$39.67
7.	S.60796	\$63.95
8.	S.60881	\$25.30
8.	S.60882	\$25.30
8.	S.60883	\$25.30
8.	S.60884	\$25.30
8.	S.60885	\$25.30
8.	S.60886	\$28.33
8.	S.60887	\$28.33
8.	S.60888	\$28.33
8.	S.60889	\$28.33
8.	S.60890	\$28.33
9.	S.61103	\$30.83

WE ARE NOT RESPONSIBLE FOR MIS-PRINTS OR PRICE CHANGES



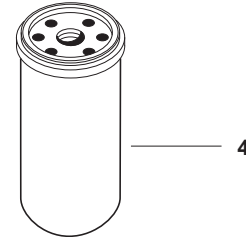
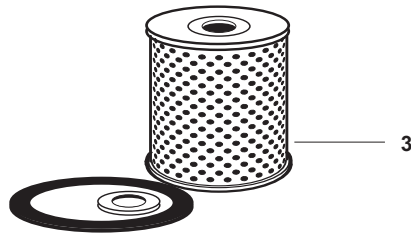
MELING
MADE IN USA
Made in USA



F3_b

Spare Parts for FORD
Tractors Built 1939 to 1964

**Oil Pumps
and Filters
(4 Cylinder -
1939-1964)**



SPAREX No.	DESCRIPTION	EQUIVALENT	TRACTOR MODEL
1	S.66554 Oil Pump - Gear Type - Slotted Drive	EAF6621D	NAA, Jubilee
1	S.66555 Oil Pump - Gear Type - Hex Drive	EAE6621AB	600, 700, 800, 900, 601, 701, 801, 901 ('55-61 Gas)
2	S.66556 Oil Pump - Rotor Type	C3NN6621A	2000, 4000, ('62-64 Gas)
3	S.61121 Engine Oil Filter - Individually Boxed	APN6731B 86546605	9N, 2N, 8N
3	S.61122 Engine Oil Filter - Bulk Carton (Order in multiples of 12)	APN6731B 86546605	9N, 2N, 8N
3	S.60169 Engine Oil Filter - Cartridge Type w/ Gasket	CPN6731B 86546608	NAA, Jubilee, 600, 700, 800, 900, 601, 701, 801, 901, 2000, 4000
4	S.40538 Engine Oil Filter - Spin-on Type	E7NN6714AA 86546614	NAA, Jubilee, 600, 700, 800, 900, 601, 701, 801, 901, 2000, 4000

Please see Index for alternative O.E. part numbers.

These parts are Sparex parts and are not manufactured by the Original Equipment Manufacturer. Original Equipment Manufacturer names, part numbers and descriptions are quoted for reference purposes only.

10 - A

OIL PUMPS AND FILTER
(4 Cylinder - 1939 - 1964)

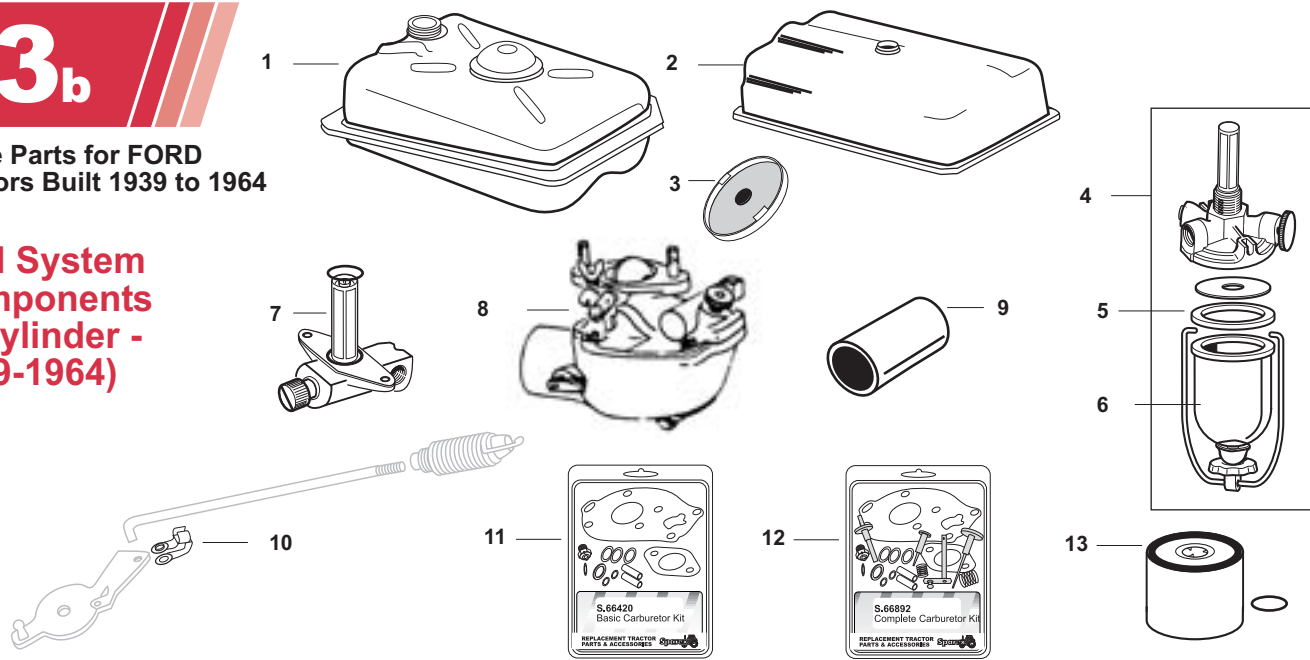
	<u>Sparex No.</u>	<u>Price</u>
1.	S.66554	\$87.97
1.	S.66555	\$87.97
2.	S.66556	\$97.25
3.	S.61121	\$7.82
3.	S.61122	\$4.97
3.	S.60169	\$7.63
4.	S.40538	\$8.62

WE ARE NOT RESPONSIBLE FOR MIS-PRINTS OR PRICE CHANGES

F3_b

Spare Parts for FORD
Tractors Built 1939 to 1964

Fuel System Components (4 Cylinder - 1939-1964)



SPAREX No.	DESCRIPTION	EQUIVALENT	TRACTOR MODEL
1	S.61950 Gas Tank - Less Cap	9N9002	9N, 2N, 8N
2	S.61130 Gas Tank - Less Cap (Uses either Threaded Shut-off or center mounted Bolt on Shut-off)	NAA9002E NCA9002A	NAA, Jubilee, 600, 700, (601, 701, 2000 Can fit but has no hole for sender unit) (800, 900, 801, 901, 4000 Will fit but smaller capacity and no hole for sender unit)
3	S.65819 Cap - Gas Tank	D5NN9030A	9N, 2N, 8N, NAA, Jubilee, 600, 700, 800, 900, 601, 701, 801, 901, 2000, 4000
4	S.61577 Shut Off & Sediment Bowl Assembly	2N9155B	9N, 2N, 8N, NAA, Jubilee
5	S.61508 Gasket - Sediment Bowl (2" OD) Pack of 10	NAA9160A	(9N, 2N, 8N, NAA, Jubilee, 600, 700, 800, 900, 39/57)
6	S.66417 Sediment Bowl (2" OD x 1.280")	9N9162	(9N, 2N, 8N, NAA, Jubilee, 600, 700, 800, 900, 39/57)
7	S.60365 Shut-off Assembly w/ O-Ring (1/4" Fuel Line)	311292	(600, 700, 800, 900, 601, 701, 801, 901 ->12/60)
8	S.61596 Carburetor	8N9510C	9N, 2N, 8N
9	S.60595 Hose - Carburetor to Air Cleaner Pipe	9N9652	(9N, 2N, 8N, NAA, Jubilee, 600, 700, 800, 900 ->58)
10	S.41343 Throttle Rod Clip	D9NN9825AA D9NN9825AB	NAA, Jubilee, 600, 700, 800, 900, 601, 701, 801, 901, 2000, 4000 (-> '65)
11	S.66420 Basic Carburetor Kit - Includes: Gaskets, Throttle Shaft, Needle & Seat (Viton), Shaft Seals, Float Pin, Screws		9N, 2N, 8N
11	S.66421 Basic Carburetor Kit - Includes: Gaskets, Throttle Shaft, Needle & Seat (Viton), Shaft Seals, Float Pin, Screws		(NAA, Jubilee, 600, 700 ->57)
12	S.66893 Complete Carburetor Kit - Includes: Basic Kit plus Choke Shaft, Spring, Adjusting Needles, Main Nozzle		9N, 2N, 8N
13	S.66892 Complete Carburetor Kit - Includes: Basic Kit plus Choke Shaft, Spring, Adjusting Needles, Main Nozzle		(NAA, Jubilee, 600, 700 ->58)
13	S.61788 Fuel Filter - Diesel	309991 86546599	601, 701, 801, 901, 2000, 4000
13	S.70536 Fuel Filter - Diesel	CAPN99162A	6000

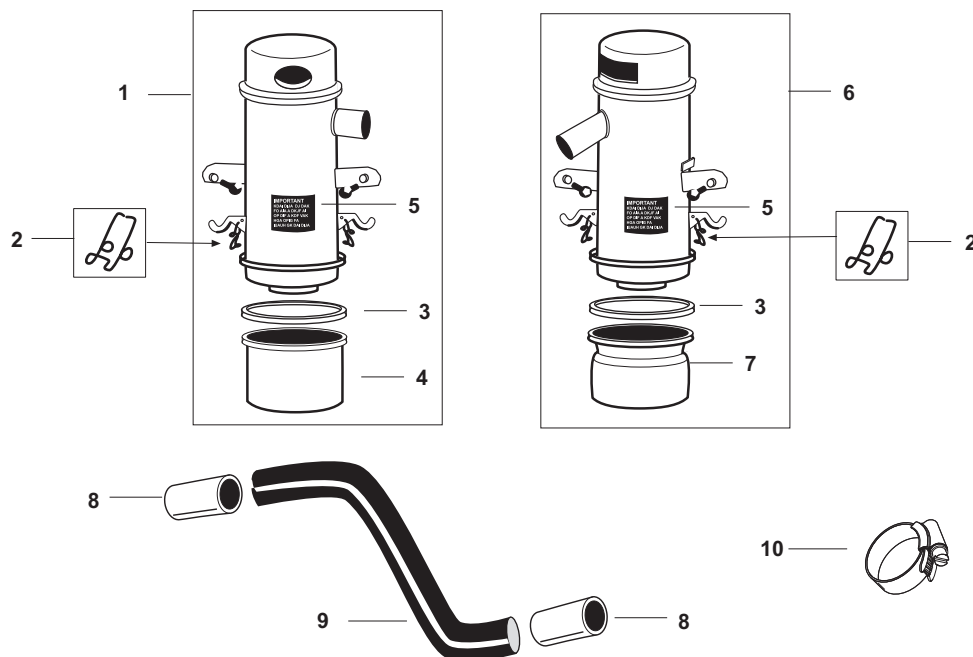
11 - A

FUEL SYSTEM COMPONENTS
(4 Cylinder - 1939 - 1964)

	<u>Sparex No.</u>	<u>Price</u>
1.	S.61950	\$196.92
2.	S.61130	\$246.30
3.	S.65819	\$7.02
4.	S.61577	\$19.27
5.	S.61508	\$5.33
6.	S.66417	\$1.67
7.	S.60365	\$48.55
8.	S.61596	\$166.00
9.	S.60595	\$1.40
10.	S.41343	\$1.42
11.	S.66420	\$13.48
11.	S.66421	\$13.82
12.	S.66893	\$36.74
13.	S.66892	\$37.32
13.	S.61788	\$20.05
13.	S.70536	\$7.73

WE ARE NOT RESPONSIBLE FOR MIS-PRINTS OR PRICE CHANGES

Air Cleaners and Related Components (4 Cylinder - 1939-1964)



SPAREX No.	DESCRIPTION	EQUIVALENT	TRACTOR MODEL
1	S.61620 Air Cleaner Assembly	8N9600B	8N
2	S.61646 Spring Clip	9N9678	(8N, NAA, Jubilee, 600, 700, 800, 900 ->58)
3	S.61647 Gasket	9N9623B	8N
4	S.61648 Cup	311507	8N
5	S.66624 Decal - Air Cleaner Instruction		(8N, NAA, Jubilee, 600, 700, 800, 900 ->58)
6	S.60578 Air Cleaner Assembly	312917 EAE9600D	NAA, Jubilee, 600
6	S.60582 Air Cleaner Assembly	C7NN9600J 312918	700, 800, 900
7	S.60583 Cup	B5NN9658A	(NAA, Jubilee, 600, 700, 800, 900 ->58)
8	S.60595 Air Cleaner Hose	9N9652	(9N, 2N, 8N, NAA, Jubilee, 600, 700, 800, 900 ->58)
9	S.60603 Air Cleaner Tube	9N18215C	9N, 2N, 8N
10	S.04330 Clamp - Air Cleaner Hose	107325 81811886	Fits S.60595

Please see Index for alternative O.E. part numbers.

These parts are Sparex parts and are not manufactured by the Original Equipment Manufacturer.
Original Equipment Manufacturer names, part numbers and descriptions are quoted for reference purposes only.

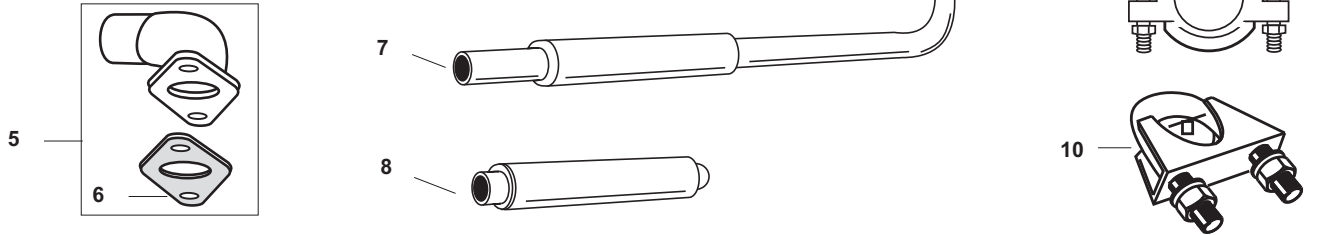
12 - A

AIR CLEANERS AND RELATED COMPONENTS
(4 Cylinder - 1939 - 1964)

	<u>Sparex No.</u>	<u>Price</u>
1.	S.61620	\$102.99
2.	S.61646	\$4.97
3.	S.61647	\$4.80
4.	S.61648	\$24.50
5.	S.66624	\$1.93
6.	S.60578	\$121.80
6.	S.60582	\$128.57
7.	S.60583	\$28.14
8.	S.60595	\$1.40
9.	S.60603	\$15.20
10.	S.04330	\$1.87

WE ARE NOT RESPONSIBLE FOR MIS-PRINTS OR PRICE CHANGES

Manifolds and Mufflers (4 Cylinder - 1939-1964)



SPAREX No.	DESCRIPTION	EQUIVALENT	TRACTOR MODEL
1	S.60607 Manifold (Less Gaskets)	9N9425	9N, 2N, 8N
2	S.60613 Manifold Gasket Set	9N9448 9N9447	9N, 2N, 8N
3	S.60699 Manifold w/ Gasket - Gas	B9NN9425A	NAA, Jubilee, 600, 700, 800, 900, 601, 701, 801, 901, 2000, 4000
4	S.60307 Manifold Gasket - Gas	C0NN9448C	Same As Above
5	S.60089 Elbow w/ Gasket	310075	801, 901, 4000
6	S.60309 Gasket	NAA55232A	NAA, Jubilee, 600, 700, 800, 900, 601, 701, 2000
6	S.60306 Gasket	310074	801, 901, 4000
7	S.60445 Muffler	8N5230	9N, 2N, 8N
8	S.61355 Muffler - 1 5/8" Inlet 1 3/4" Inlet End, OD 1 11/16" Outlet End, OD	NAA5230E	NAA, Jubilee, 600, 700, 800, 900, 601, 701, 2000
8	S.61533 Muffler - 2" Inlet 2 1/8" Inlet End, OD 1 7/8" Outlet End, OD	310079	801, 901, 4000
9	S.60654 Muffler Clamp	CAPN5200A	9N, 2N, 8N
10	S.08872 Muffler Clamp - 1 1/8"		
10	S.08873 Muffler Clamp - 1 1/4"		
10	S.08874 Muffler Clamp - 1 3/8"		
10	S.08875 Muffler Clamp - 1 1/2"		
10	S.08876 Muffler Clamp - 1 5/8"		
10	S.08877 Muffler Clamp - 1 11/16"		
10	S.08878 Muffler Clamp - 1 3/4"		
10	S.08879 Muffler Clamp - 1 7/8"		
10	S.08880 Muffler Clamp - 2"		
10	S.06314 Muffler Clamp - 2 1/8"		

13 - A

MANIFOLDS AND MUFFLERS
(4 Cylinder - 1939 - 1964)

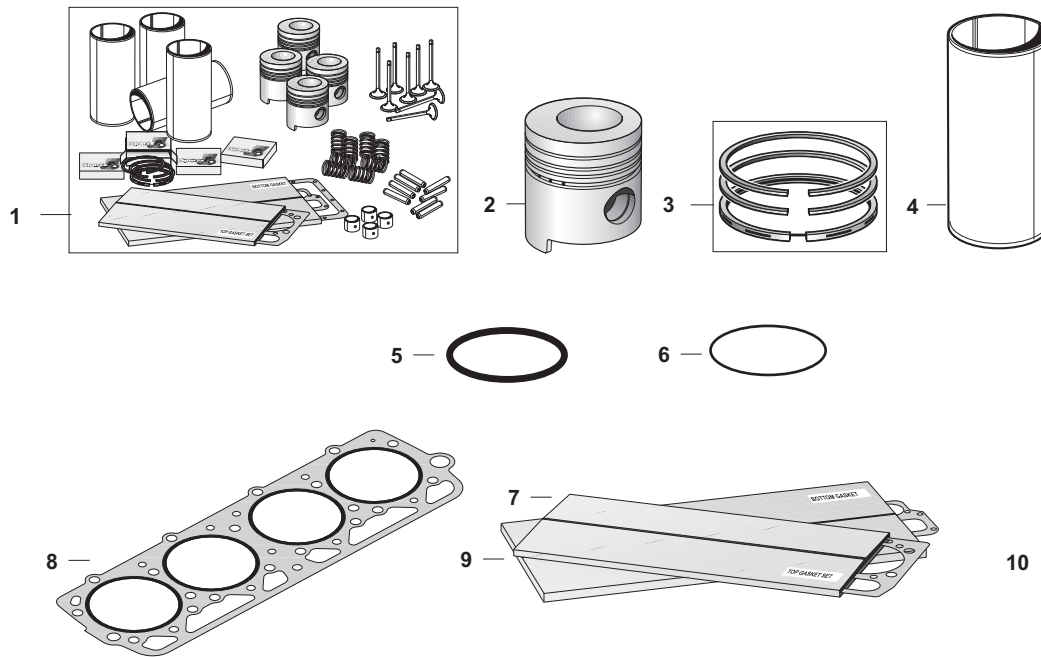
	<u>Sparex No.</u>	<u>Price</u>
1.	S.60607	\$71.00
2.	S.60613	\$4.00
3.	S.60699	\$155.83
4.	S.60307	\$2.75
5.	S.60089	\$18.32
6.	S.60309	\$1.15
6.	S.60306	\$1.25
7.	S.60445	\$33.28
8.	S.61355	\$19.17
8.	S.61533	\$26.58
9.	S.60654	\$4.92
10.	S.08872	\$0.78
10.	S.08873	\$0.82
10.	S.08874	\$0.85
10.	S.08875	\$0.95
10.	S.08876	\$0.98
10.	S.08877	\$1.33
10.	S.08878	\$1.03
10.	S.08879	\$1.07
10.	S.08880	\$1.15
10.	S.06314	\$1.15

WE ARE NOT RESPONSIBLE FOR MIS-PRINTS OR PRICE CHANGES



Spare Parts for FORD Tractors Built 1939 to 1964

Overhaul Kits,
Piston, Rings
and Liners
(Fordson Major,
Power Major,
Super Major)



SPAREX No.	DESCRIPTION	EQUIVALENT	TRACTOR MODEL
1	S.66816 Overhaul Kit w/ Valve Train (1 1/4" Piston Pin - No O-Ring top of liner) Contains: Pistons, Rings, Liners, Liner Seals, Rod Bushings, Intake & Exhaust Valves, Springs, Valve Springs 8 1/2 Coils, Upper & Lower Gasket Set		(Fordson Major 52-4/57)
1	S.66710 Overhaul Kit - Valve springs 8 1/2 Coils (1 3/8" Piston Pin - No O-Ring top of liner) Contains: Same as Above		(Fordson Major, Power Major 4/57-2/61)
1	S.66711 Overhaul Kit - Valve Springs 7 Coils (1 3/8" Piston Pin - O-Ring top of liner) Contains: Same as Above		(Fordson Super Major 61-12/64)
2	S.66719 Piston (1 1/4" Pin)	E1ADDN6102G	Fordson Major
2	S.65958 Piston (1 3/8" Pin)	E1ADDN6102J	Fordson Power Major, Super Major (Use in sets of 4. Do not use with Decompressor or if a total of .010" has been removed from the cylinder block or head 7/1959-1964 After SN 1425097)
3	S.65952 Ring Set - 1 Cylinder	510E6148A	Fordson Major, Power Major, Super Major
4	S.66374 Liner (4.22/4.23 Top Face Dia) No upper O-Ring	E1ADDN6055B	(Fordson Major, Power Major 52-2/61)
4	S.65957 Liner - w/ O-Ring on upper end	E1ADDN6055E	Fordson Super Major
5	S.66563 Liner Seal - Lower (4.2" ID)	E1ADKN6061A	(Fordson Major, Power Major 52-2/61)
5	S.66045 Liner Seal - Lower (5mm)	116534ESA	(Fordson Super Major 2/61-12/64)
6	S.66048 Liner Seal - Upper (2.5mm)	116533ESA	(Fordson Super Major 2/61-12/64)
7	S.66336 Upper Gasket Set w/ Head Gasket	E1ADDN6C037C	Fordson Major, Power Major, Super Major
8	S.65881 Head Gasket	E1ADDN6051C	Fordson Major, Power Major, Super Major
9	S.66385 Lower Gasket Set	E1ADDN6008AK	Fordson Major, Power Major, Super Major
10	S.66337 Pan Gasket Set	E1ADDN6781C	Fordson Major, Power Major, Super Major

Please see Index for alternative O.E. part numbers.

These parts are Sparex parts and are not manufactured by the Original Equipment Manufacturer. Original Equipment Manufacturer names, part numbers and descriptions are quoted for reference purposes only.

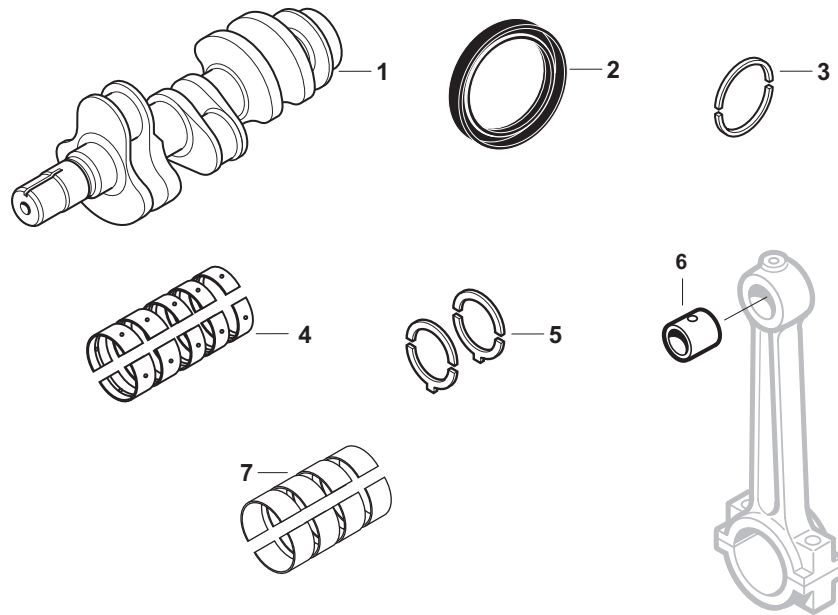
14 - A

OVERHAUL KITS, PISTON, RINGS AND LINERS
(Fordson Major, Power Major, Super Major)

	<u>Sparex No.</u>	<u>Price</u>
1.	S.66816	\$674.88
1.	S.66710	\$617.87
1.	S.66711	\$612.72
2.	S.66719	\$70.85
2.	S.65958	\$79.05
3.	S.65952	\$19.52
4.	S.66374	\$50.60
4.	S.65957	\$63.95
5.	S.66563	\$9.10
5.	S.66045	\$2.48
6.	S.66048	\$1.97
7.	S.66336	\$67.50
8.	S.65881	\$26.40
9.	S.66385	\$62.08
10.	S.66337	\$17.77

WE ARE NOT RESPONSIBLE FOR MIS-PRINTS OR PRICE CHANGES

Crankshaft, Main Bearings and Related Components (Fordson Major, Power Major, Super Major)



SPAREX No.	DESCRIPTION	EQUIVALENT	TRACTOR MODEL
1	S.60452 Crankshaft - less Bearing	E1ADDN6303F	Fordson Major, Power Major, Super Major
2	S.61431 Seal - Front Crankshaft (89 x 62 x 12 mm)	E1ADKN6362A	(Fordson Major 52-9/54)
2	S.61432 Seal - Front Crankshaft (89 x 65 x 12 mm)	510E6362	(Fordson Major, Power Major, Super Major w/ Narrow Belt 9/54->)
3	S.65685 Seal - Rear Crankshaft (2 pcs)	793F6701AAA	Fordson Major, Power Major, Super Major
4	S.65213 Main Bearing Set - Standard	528E6K371A	Fordson Major, Power Major, Super Major
4	S.65214 Main Bearing Set - .010"	528E6K371B	Fordson Major, Power Major, Super Major
4	S.65215 Main Bearing Set - .020"	528E6K371C	Fordson Major, Power Major, Super Major
4	S.65216 Main Bearing Set - .030"	528E6K371D	Fordson Major, Power Major, Super Major
4	S.65217 Main Bearing Set - .040"	528E6K371E	Fordson Major, Power Major, Super Major
5	S.66783 Thrust Washer Set - Standard	E159Z9	Fordson Major, Power Major, Super Major
6	S.65235 Bushing - Connecting Rod (1.503" OD x 1 3/8" ID x 1.475 long)	E1ADDN207	(Fordson Major, Power Major, Super Major 4/57->)
7	S.65189 Rod Bearing Set - Standard	703F6211BAA	Fordson Major, Power Major, Super Major
7	S.65190 Rod Bearing Set - .010"	703F6211BBA	Fordson Major, Power Major, Super Major
7	S.65191 Rod Bearing Set - .020"	703F6211BCA	Fordson Major, Power Major, Super Major
7	S.65192 Rod Bearing Set - .030"	703F6211BDA	Fordson Major, Power Major, Super Major
7	S.65193 Rod Bearing Set - .040"	703F6211BEA	Fordson Major, Power Major, Super Major

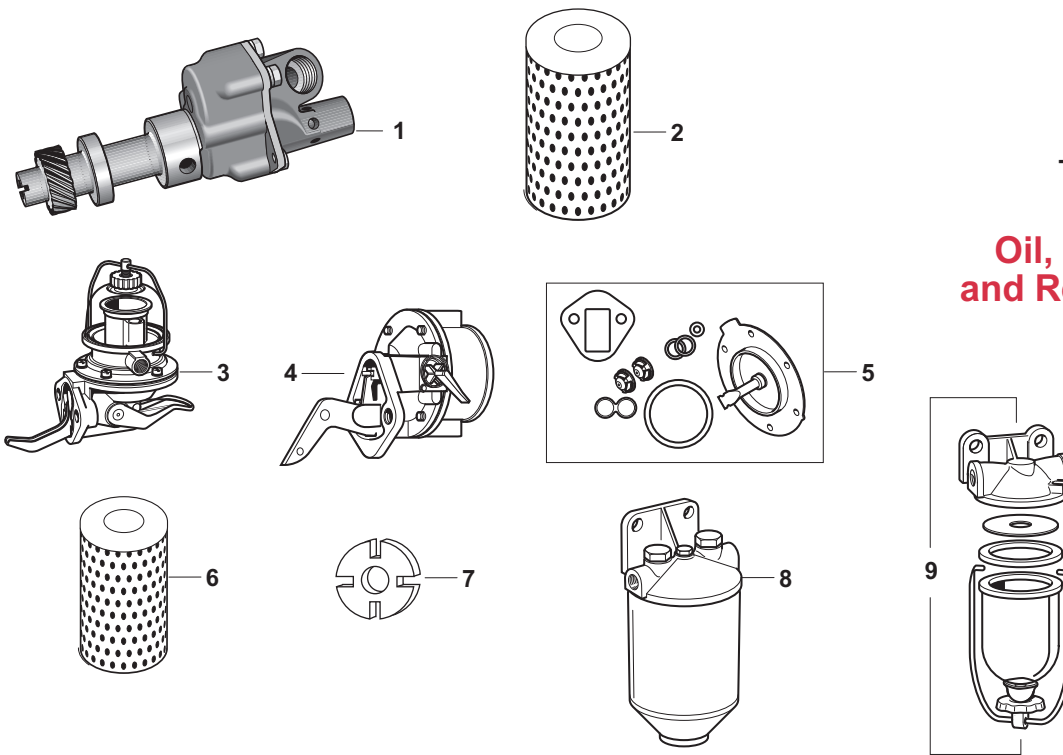
15 - A

CRANKSHAFT, MAIN BEARINGS AND RELATED COMP.

	<u>Sparex No.</u>	<u>Price</u>
1.	S.60452	\$355.25
2.	S.61431	\$17.77
2.	S.61432	\$17.77
3.	S.65685	\$5.95
4.	S.65213	\$43.53
4.	S.65214	\$43.53
4.	S.65215	\$43.53
4.	S.65216	\$44.40
4.	S.65217	\$43.53
5.	S.66783	Call for Price
6.	S.65235	\$4.00
7.	S.65189	\$34.55
7.	S.65190	\$27.00
7.	S.65191	\$33.25
7.	S.65192	\$34.18
7.	S.65193	\$33.25

WE ARE NOT RESPONSIBLE FOR MIS-PRINTS OR PRICE CHANGES

Oil, Fuel Pumps, Filters and Related Components (Fordson Major, Power Major, Super Major)



SPAREX No.	DESCRIPTION	EQUIVALENT	TRACTOR MODEL
1	S.65878 Oil Pump w/ Relief Valve	528E6600	(Fordson Major, Power Major, Super Major 4/57-12/64) Note: S.65878. When replacing oil pump in engine prior to SN 1599502 you must replace auxiliary driveshaft with E96-CP9. On engines after SN 1599501 use driveshaft E94-CP5.
2	S.40535 Oil Filter - Cartridge (6" x 2 3/4" Dia x 1 5/16" ID)	EPN6731A	(Fordson Major, Power Major 52-12/58)
2	S.40537 Oil Filter - Cartridge (4 1/2" x 2 13/16" Dia x 13/16" ID)	957E6731A	(Fordson Power Major, Super Major 59-64)
3	S.66105 Fuel Lift Pump w/ Glass Sediment Bowl	E1ADKN9350B	(Fordson Major, Power Major 52-8/61)
4	S.65282 Fuel Lift Pump	E1ADDN9350	(Fordson Super Major 8/61-64)
5	S.65284 Repair Kit - Lift Pump	E41Z9	Fordson Major, Power Major
6	S.61430 Fuel Filter Element	EPN99162A	Fordson Major, Power Major, Super Major
7	S.66550 Pad - Injector Pump Drive	E1ADDN993184	Fordson Major, Power Major, Super Major
8	S.65812 Fuel Filter Assembly	E1ADDN9155C	(Fordson Super Major 8/61-64)
9	S.65801 Fuel Sediment Bowl Assembly	510E9155E	(Fordson Super Major 8/61-64)

Please see Index for alternative O.E. part numbers.

These parts are Sparex parts and are not manufactured by the Original Equipment Manufacturer. Original Equipment Manufacturer names, part numbers and descriptions are quoted for reference purposes only.

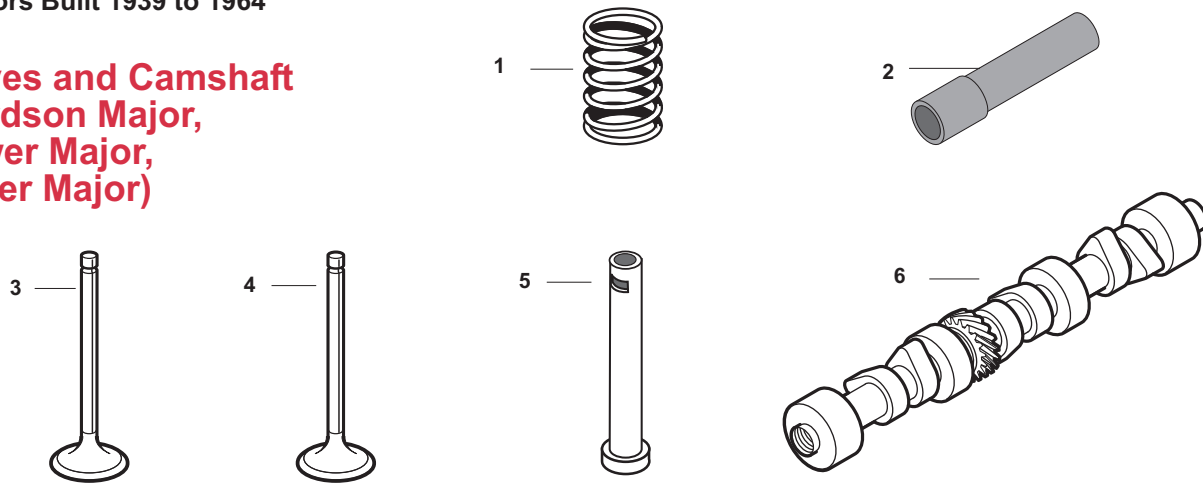
16 - A

OIL, FUEL PUMPS, FILTERS AND RELATED COMP.
(Fordson Major, Power Major, Super Major)

	<u>Sparex No.</u>	<u>Price</u>
1.	S.65878	\$275.32
2.	S.40535	\$6.58
2.	S.40537	\$5.38
3.	S.66105	\$133.13
4.	S.65282	\$68.92
5.	S.65284	\$19.73
6.	S.61430	\$10.49
7.	S.66550	\$34.45
8.	S.65812	\$35.17
9.	S.65801	\$15.58

WE ARE NOT RESPONSIBLE FOR MIS-PRINTS OR PRICE CHANGES

Valves and Camshaft (Fordson Major, Power Major, Super Major)



SPAREX No.	DESCRIPTION	EQUIVALENT	TRACTOR MODEL
1	S.65708 Spring - 8 1/2 Coils - Early Type	E1ADKN6513B	Fordson Major, Power Major
1	S.65709 Spring - 7 Coils - Late Type	E1ADDN6513	(Fordson Super Major 4/61-64)
2	S.66779 Guide - Intake/Exhaust	E1ADDN6510A	Fordson Major, Power Major, Super Major
3	S.65699 Valve - Intake	E1ADDN6507	Fordson Major, Power Major, Super Major
4	S.65871 Valve - Exhaust	813F6505DAA	(Fordson Major, Power Major, Super Major 1/53-64)
5	S.66712 Tappet	E1ADKN6489B	Fordson Major, Power Major, Super Major
6	S.61038 Camshaft w/ 1 Bolt Hole	528E6250D	(Fordson Super Major 4/61-64) Note: When replacing Cam in prior 4/57 tractor, Cam Gear and Tappets must also be replaced.

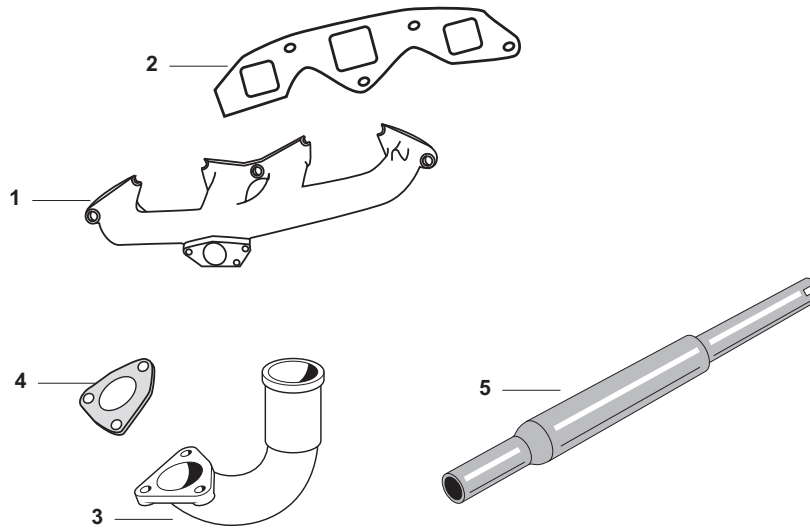
17 - A

VALVES AND CAMSHAFT
(Fordson Major, Power Major, Super Major)

	<u>Sparex No.</u>	<u>Price</u>
1.	S.65708	\$1.78
1.	S.65709	\$1.37
2.	S.66779	\$5.25
3.	S.65699	\$8.72
4.	S.65871	\$12.87
5.	S.66712	\$35.43
6.	S.61038	\$176.38

WE ARE NOT RESPONSIBLE FOR MIS-PRINTS OR PRICE CHANGES

**Exhaust System
(Fordson Major,
Power Major,
Super Major)**



SPAREX No.	DESCRIPTION	EQUIVALENT	TRACTOR MODEL
1	S.61645 Manifold w/ Angled Mounting Holes		Fordson Major, Power Major, Super Major
2	S.66557 Gasket - Manifold w/ Angled Mounting Holes		Fits S.61645 Manifold
3	S.15802 Elbow - Exhaust	E1ADKN9488	Fordson Major, Power Major, Super Major
4	S.66130 Gasket - Elbow	E1ADKN9450B	Fordson Major, Power Major, Super Major
5	S.06305 Muffler	E1ADDN5230A	Fordson Major, Power Major, Super Major

Please see Index for alternative O.E. part numbers.

These parts are Sparex parts and are not manufactured by the Original Equipment Manufacturer.
Original Equipment Manufacturer names, part numbers and descriptions are quoted for reference purposes only.


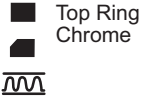
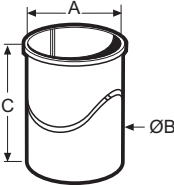
18 - A

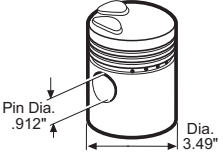

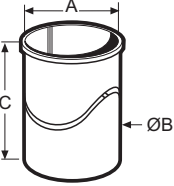
EXHAUST SYSTEM
(Fordson Major, Power Major, Super Major)

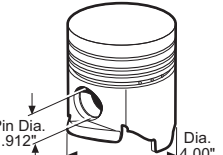

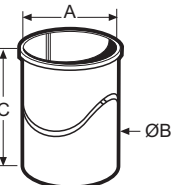
	<u>Sparex No.</u>	<u>Price</u>
1.	S.61645	\$166.25
2.	S.66557	\$3.53
3.	S.15802	\$57.20
4.	S.66130	\$1.78
5.	S.06305	\$30.57

WE ARE NOT RESPONSIBLE FOR MIS-PRINTS OR PRICE CHANGES

Technical Information

Models	Piston	Ring Sets	Liner	
9N, 2N, 8N	S.60840 	S.60853  <ul style="list-style-type: none"> Top Ring Chrome 		S.60846 Heavywall .090" A=3.18" ID B=3.36" OD C=6.437" Length 3.40" Top Lip S.60847 Thinwall .040" A=3.18" ID B=3.36" OD C=6.437" Length 3.36" Top Lip
9N, 2N, 8N - General Information				
Crankshaft Specifications Standard Main Journals 2.248-2.249 Standard Rod Journals 2.093-2.094 Main Bearing Cap Torque 75-80 Ft Lb Rod Bearing Cap Torque 45 Ft Lb		Valve Clearance Intake .012 Exhaust .014	Head Torque Nuts 50-50 Ft Lb Hot Bolts 65-70 Ft Lb Hot	Point Gap Front Drive Distributor .015 Angle Drive Distributor .025 Spark Plugs .025

NAA, Jubilee, 600, 700, 601, 701, 2000 134 cu in Gas	S.60841 (Overbore) 	S.60854 (Overbore)  <ul style="list-style-type: none"> Top Ring Chrome 		S.60848 (Overbore) A=3.50" ID B=3.65" OD C=6.93" Length 3.74" Top Lip
NAA, Jubilee, 600, 700, 601, 701, 2000 - General Information				
Crankshaft Specifications Standard Main Journals 2.497-2.498 Standard Rod Journals 2.297-2.298 Main Bearing Cap Torque 100-105 Ft Lb Rod Bearing Cap Torque 45-50 Ft Lb		Valve Clearance Intake .014-.016 Hot Exhaust .014-.016 Hot	Head Torque Gasoline 65-70 Hot Rocker Support Bolts 45 Ft Lb	Point Gap .025 Plug Gap .025

800, 900, 801, 901, 4000	S.60842 (Overbore) 	S.60855 (Overbore)  <ul style="list-style-type: none"> Top Ring Chrome 		S.60845 (Overbore) A=4.01" ID B=4.10" OD C=6.93" Length 4.25" Top Lip
800, 900, 801, 901, 4000 - General Information				
Crankshaft Specifications Standard Main Journals 2.497-2.498 Standard Rod Journals 2.297-2.298 Main Bearing Cap Torque 100-105 Ft Lb Rod Bearing Cap Torque 45-50 Ft Lb		Valve Clearance Intake .014-.016 Hot Exhaust .014-.016 Hot	Head Torque Gasoline 65-70 Hot Rocker Support Bolts 45 Ft Lb	Point Gap .025 Plug Gap .025

General Information

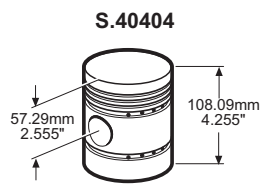

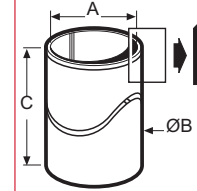
Do not use gasoline or kerosene to clean the sleeve walls after honing or boring the cylinders. Solvents of this type will not remove the abrasive but will further imbed small abrasive particles into the pores of the cylinder sleeves. Wash the sleeve bores with hot soapy water. Flush water jackets to remove foreign materials which might cause excessive wear to the water pump. Coat the cylinder with clean engine oil to prevent rusting.

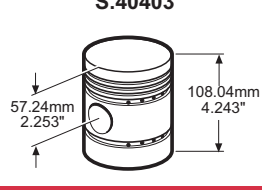


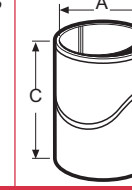
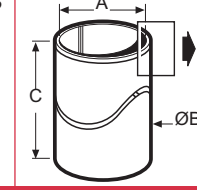
TECHNICAL INFORMATION

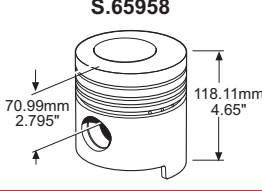

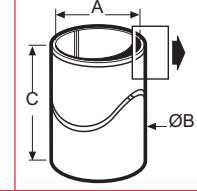
<u>Sparex No.</u>	<u>Price</u>
S.60840	\$17.40
S.60841	\$30.18
S.60842	\$34.18
S.60853	\$29.32
S.60854	\$24.43
S.60855	\$23.38
S.60846	\$29.22
S.60847	\$28.00
S.60848	\$35.35
S.60845	\$29.57

WE ARE NOT RESPONSIBLE FOR MIS-PRINTS OR PRICE CHANGES

Technical Information

Models	Piston	Ring Sets	Liner	Finished	Semi-Finished		
A3.144	S.40404 	S.40418 	 S.40433 S.40439	S.40433 A=88.925mm/3.5" B=93.71mm/3.6895" C=215.9mm/8.5"	S.40439 A=Un-Finished B=93.71mm/3.6895" C=215.9mm/8.5"		
Dexta - A3.144 - Perkins Diesel - General Information							
Number of Cylinders	3	Crankshaft Journal Dia.	2.749"	Injection Pump Make - Model	Simms - Inline	Big End Cap Torque	65/70Lbs/Ft
Bore - Inches	3.5"	Crank Pin Diameter	2.249"	Injection Pump Timing-Mech.	20° BTDC	Flywheel Bolt Torque	75 Lbs/Ft
Stroke - Inches	5"	Piston Pin Diameter	1.250"	Injection Pump Timing-Vacuum	26° BTDC	Compression Ring Gaps	0.008"-0.012"
Displacement - Cu.In.	144 cu.in.	Firing Order	1-2-3	Injector Nozzle Setting	2300 Psi.	Oil Control Ring Gaps	0.008"-0.012"
Compression Ratio	16.5:1	Valve Clearance - Inlet	0.010" Hot	Engine Low Idle Rpm	550	Crank Case Oil	2 Gallons
Pistons Removed from Main Bearings	Above	Valve Clearance - Exhaust	0.010" Hot	Engine High Idle Rpm	2200	Cooling System	2.25 Gallons
Cylinder Sleeves	Dry	Valve Angle - Inlet	44°	Cylinder Head Torque	55-60 Lbs/Ft		
		Valve Angle - Exhaust	44°	Main Bearing Cap Torque	90/95 Lbs/Ft		

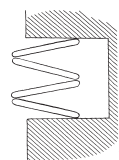
A3.152	S.40403 	S.40417 	S.40430 	S.41323 	 S.40432 S.40438	S.40432 A=91.49mm/3.602" B=93.66mm/3.687" C=215.9mm/8.5"	S.40438 A=Un-Finished B=93.66mm/3.687" C=215.9mm/8.5"
Super Dexta - A3.152 - Perkins Diesel - General Information							
Number of Cylinders	3	Crankshaft Journal Dia.	2.749"	Injection Pump Make - Model	Simms - Inline	Big End Cap Torque	70-80 Lbs/Ft
Bore - Inches	3.6"	Crank Pin Diameter	2.249"	Injection Pump Timing-Mech.	20° BTDC	Flywheel Bolt Torque	75 Lbs/Ft
Stroke - Inches	5"	Piston Pin Diameter	1.250"	Injection Pump Timing-Vacuum	26° BTDC/1760	Compression Ring Gaps	0.009"-0.013"
Displacement - Cu.In.	152.7cu.in.	Firing Order	1-2-3	Injector Nozzle Setting	Psi.	Oil Control Ring Gaps	0.009"-0.013"
Compression Ratio	17.4:1	Valve Clearance - Inlet	0.010" Hot	Engine Low Idle Rpm	500	Crank Case Oil	2 Gallons
Pistons Removed from Main Bearings	Above	Valve Clearance - Exhaust	0.010" Hot	Engine High Idle Rpm	2200	Cooling System	2.25 Gallons
Cylinder Sleeves	Dry	Valve Angle - Inlet	44°	Cylinder Head Torque	55-60 Lbs/Ft		
		Valve Angle - Exhaust	44°	Main Bearing Cap Torque	110-120 Lbs/Ft		

Major Super Major Power Major	S.65958 	S.65952 		S.65957 A=100.00mm/3.94" B=111.76mm/4.40" C=222.88mm/8.77"			
Major 57>65 - Super Major - General Information							
Number of Cylinders	4	Crankshaft Journal Dia.	3"	Valve Angle - Exhaust	29.5°	Main Bearing Cap Torque	See Manual
Bore - Inches	3.937"	Crank Pin Diameter	2.5"	Injection Pump Make - Model	Simms - Inline	Big End Cap Torque	55/60 Lbs/Ft
Stroke - Inches	4.525"	Piston Pin Diameter-Early	1.250"	Injection Pump Timing-Mech.	21° BTDC	Flywheel Bolt Torque	80/90 Lbs/Ft
Displacement - Cu.In.	220.35 cu.in.	Piston Pin Diameter-Late	1.375"	Injection Pump Timing-Vacuum	See S.14222	Compression Ring Gaps	0.014"-0.034"
Compression Ratio	16:1	Firing Order	1-2-4-3	Injector Nozzle Setting	1760 Psi.	Oil Control Ring Gaps	0.015"-0.035"
Pistons Removed from Main Bearings	Above	Valve Clearance - Inlet	0.015" Hot	Engine Low Idle Rpm	550	Crank Case Oil	2 Gallons
Cylinder Sleeves	Wet	Valve Clearance - Exhaust	0.012" Hot	Engine High Idle Rpm	1900-1925	Cooling System	3.6 Gallons
		Valve Angle - Inlet	29.5°	Cylinder Head Torque	85/90 Lbs/Ft		



Cord Ring Instructions

Third Compression Ring consists of 4 steel segments. Grasp and compress as shown until ring ends slightly overlap. Ring ends will curl up or down, if segment is turned over. (Ring ends should curl down on segment placed in bottom of groove, up on 2nd segment, etc. See ill right.) Space end gaps 180° apart for alternate segments after all are installed.



Please see Index for alternative O.E. part numbers.

These parts are Sparex parts and are not manufactured by the Original Equipment Manufacturer. Original Equipment Manufacturer names, part numbers and descriptions are quoted for reference purposes only.

TECHNICAL INFORMATION

<u>Sparex No.</u>	<u>Price</u>
S.40404	\$52.85
S.40403	\$39.97
S.65958	\$79.05
S.40418	\$16.77
S.40417	\$16.07
S.40430	\$16.33
S.41323	\$15.10
S.65952	\$19.52
S.40433	\$44.32
S.40432	\$33.12
S.40439	\$31.97
S.40438	\$35.43
S.65957	\$63.95

WE ARE NOT RESPONSIBLE FOR MIS-PRINTS OR PRICE CHANGES